



Image Credit | Raymond Clinkscale

# EPIDEMIOLOGY METHODS CERTIFICATE

*Provides the Essential Skills for Conducting Epidemiological Studies*

## ABOUT

The 15-Credit Epidemiology Methods Certificate can help you advance your knowledge and skills to develop and interpret epidemiologic findings. Students will learn how to confidently analyze and interpret epidemiologic study findings. Courses explore study design, statistical programming and analysis of epidemiological data.

The **Epidemiology Methods Certificate** is intended for:

- Public health students in disciplines other than epidemiology
- Individuals in the public health workforce who want to hone their epi-skills
- Individuals working in the pharmaceutical industry who wish to have a stronger foundation in epidemiologic methods

## PROGRAM DESIGN

You can complete the Epidemiology Methods Certificate in two to three semesters, or you can plan a schedule for completing the courses over a two-year period (*maximum timeframe*). The late afternoon/evening schedule makes it convenient to continue working or gain experience while earning your Epidemiology Methods Certificate.

Depending on the degree program and concentration, certificate courses may also be applied toward a degree at the Rutgers School of Public Health. Certificate holders must apply and be admitted to the degree program.

**CURRICULUM REQUIREMENTS\*** (15 credits) *Courses are available in-person, remote and/or online, varying by semester and course.*

- **PHCO 0504** - Introduction to Biostatistics\*\* (3 cr.)
- **BIST 0535** - Biostatistical Computing (3 cr.)
- **BIST 0551** - Applied Regression Analysis for Public Health Studies (3 cr.)
- **EPID 0656** - Intermediate Epidemiologic Research Methods (3 cr.)
- **EPID 0657** - Applied Methods in Epidemiologic Research (3 cr.)

\*Prerequisite: PHCO 0502 - Principles and Methods of Epidemiology (3 cr.) or equivalent course.

\*\*Prerequisite: Quantitative Skills Assessment

Graduates of CEPH-accredited schools and programs of public health may transfer up to six (6) credits towards a certificate program if earned within the past seven years with a grade of B or better and are deemed appropriate by the respective Certificate Program Coordinator.

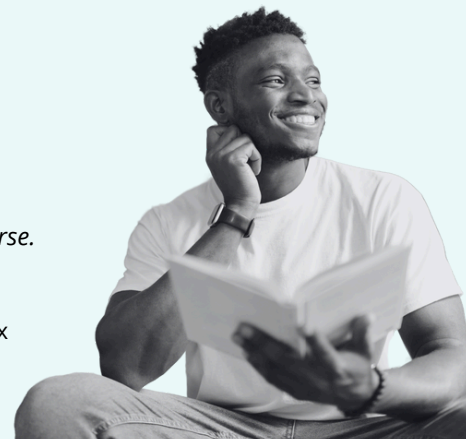


Image Credit | Adobe Stock



DID YOU KNOW?

The school has several research centers and works closely with Rutgers University institutes:

- Center for Public Health Workforce Development
- Center for Health, Identity, Behavior & Prevention Studies
- Center on Gun Violence Research
- Cancer Health Equity Center of Excellence
- Center for South Asian Quantitative Health & Education
- Institute for Nicotine & Tobacco Studies
- Environmental and Occupational Health Sciences Institute
- Institute for Health, Healthcare, Policy and Aging Research
- Rutgers Cancer Institute
- ...and more

“ — THE EPIDEMIOLOGY METHODS CERTIFICATE WILL HELP TO PREPARE YOU TO UNDERSTAND AND ULTIMATELY PREVENT THE ROOT CAUSES OF POOR HEALTH AND PREMATURE DEATH. WHETHER IT IS GUN VIOLENCE, THE DISPROPORTIONATELY HIGH BURDEN OF DEATH DUE TO BREAST CANCER AMONG AFRICAN AMERICAN WOMEN, OR TRACKING DRUG RESISTANT TUBERCULOSIS IN A COMMUNITY, YOUR SKILLS WILL COUNT! — ”

*Dr. Judith Graber, Associate Professor, Department of Biostatistics and Epidemiology*

## ADMISSION REQUIREMENTS

### Applicants must have:

- ▶ Completed an accredited undergraduate program in the U.S. or its equivalent
- ▶ Demonstrated academic achievement in an appropriate discipline

### Applicants must submit:

- ▶ Application for Admission
- ▶ Official transcripts of all prior work
- ▶ Letter of intent, including statement of purpose for application to the program
- ▶ Two (2) letters of recommendation
- ▶ Application fee

### International applicants must submit:

- ▶ TOEFL scores and WES evaluations

APPLY TODAY!



[go.rutgers.edu/sph-apply](https://go.rutgers.edu/sph-apply)

## COST

Tuition is governed by Rutgers University and is subject to change without notice. Please visit the [Rutgers School of Public Health's Tuition & Fees webpage](https://sph.rutgers.edu/admissions/tuition-fees) (<https://sph.rutgers.edu/admissions/tuition-fees>) to confirm current tuition rates and fees.

Gainful Employment information can be found [here](https://sph.rutgers.edu/sites/default/files/2023-03/Gainful-Employment-disclosure.pdf) (<https://sph.rutgers.edu/sites/default/files/2023-03/Gainful-Employment-disclosure.pdf>)

## Rutgers School of Public Health

### For more information, contact:

✉ [admissions@sph.rutgers.edu](mailto:admissions@sph.rutgers.edu)

### Connect with us on social:

📷 [rutgerssph](#)

📘 [Rutgers School of Public Health](#)

🌐 [Rutgers School of Public Health](#)



Image Credit | Nick Romanenko