

[sph.rutgers.edu/academics](http://sph.rutgers.edu/academics)

*Provides Specialized Training in Global Public Health*

**CURRICULUM REQUIREMENTS (15 credits)**

- PHCO 0502 - Principles and Methods of Epidemiology (3 cr.)
- UGPH 0515 - Global Communicable and Noncommunicable Diseases (3 cr.)
- UGPH 0600 - Introduction to Global Public Health (3 cr.)
- HSAP 0659 - Cross National Comparisons of Health Systems (3 cr.)
- SBHS 0652 - Program Planning and Evaluation (3 cr.)

**ADMISSION REQUIREMENTS**

Applicants must have:

- Completed an accredited undergraduate program in the U.S. or its equivalent;
- Demonstrated academic achievement in an appropriate discipline; and
- Academic credentials at least equivalent to those required for the MPH program.

Applicants must submit:

- Application for Admission;
- Official Transcripts of all prior work;
- Scores from the Graduate Record Examination (GRE);
- Letter of Intent, including statement of purpose for application to the program;
- Two (2) Letters of Recommendation; and
- Application Fee.

International applicants must submit:

- TOEFL scores and WES evaluations.



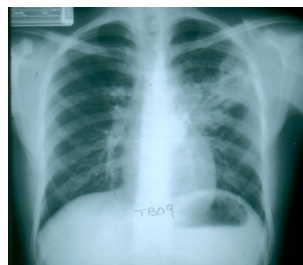
The 15-Credit Global Public Health Certificate can help you advance your knowledge and skills in the particularities and complexities of global public health. Courses explore global health and national and international health systems and policies, global health conditions and their relationship to gender, ethnicity, socioeconomic factors, environmental risks, climate, geography and catastrophic events, including violence.

**THE GLOBAL PUBLIC HEALTH CERTIFICATE IS INTENDED FOR:**

- ▶ Clinicians;
- ▶ State and local health department employees;
- ▶ International agency, disaster, or immigrant relief workers;
- ▶ Non-governmental organization (NGO) workers;
- ▶ Those working in the pharmaceutical industry; and
- ▶ Those interested in learning about global public health.

**PROGRAM DESIGN**

You can complete the Global Health Certificate in two-three semesters or you can plan a schedule for completing the courses over a two-year period (maximum timeframe.) The late afternoon/evening schedule makes it convenient to continue working or gain experience while earning your Global Public Health Certificate. The Certificate courses may also be applied toward a degree at the Rutgers School of Public Health depending on the degree program and concentration. (Certificate holders must apply and be admitted to the degree program.)



**COST**

Tuition is governed by Rutgers University and is subject to change annually. Please visit [sph.rutgers.edu/admissions](http://sph.rutgers.edu/admissions) to confirm current tuition rates and fees.

*For Gainful Employment information, please visit [sph.rutgers.edu/academics/certificate-programs.html](http://sph.rutgers.edu/academics/certificate-programs.html).*

*Graduates of CEPH-accredited schools and programs of public health may transfer up to six (6) credits towards a certificate program if earned within the past seven years with a grade of B or better and are deemed appropriate by the respective Certificate Program Coordinator.*

**For More Information:**

Office of Admissions  
p. 732-235-4646  
[admissions@sph.rutgers.edu](mailto:admissions@sph.rutgers.edu)

Program Coordinator  
Vincent Silenzio, MD, MPH  
p. 973-972-9301  
[vincent.silenzio@sph.rutgers.edu](mailto:vincent.silenzio@sph.rutgers.edu)



Photo Credit: World Health Organization

