



RUTGERS

Health Outcomes,
Policy, and Economics

SPH.RUTGERS.EDU/ACADEMICS

CURRICULUM REQUIREMENTS (18 credits)

- PHCO 0501 Health Systems and Policy (3 cr.)
- PHCO 0502 Principles and Methods of Epidemiology (3 cr.)
- PHCO 0504 Introduction to Biostatistics (3 cr.)
- HBSP 0621 Health Care Economics (3 cr.)
- HOPE 9510 Economic Modeling of Pharmaceuticals (2 cr.)
- HOPE 9516 Outcomes Research Operations (1 cr.)

Choose one of the following two:

- BIST 0535 Biostatistical Computing (3 cr.)
- HBSP 0600 Health Behavior & Policy Research Design & Methods (3 cr.)

ADMISSION REQUIREMENTS

- Completed an accredited undergraduate program in the U.S. or its equivalent;
- Demonstrated academic achievement in an appropriate discipline; and
- Academic credentials at least equivalent to those required for the MS program.

APPLICANTS MUST SUBMIT:

- Application for Admission;
- Official Transcripts of all prior academic work;
- Letter of Intent, including statement of purpose for application to the program;
- Two (2) Letters of Recommendation; and
- Application Fee.

INTERNATIONAL APPLICANTS MUST SUBMIT:

- TOEFL scores and WES evaluations.

Note: If undergraduate GPA is less than 3.0, the GRE may be required.

"The HOPE Certificate introduces concepts of value assessment of biopharmaceutical innovation by exposing students to the science of health economics outcomes research (HEOR). It is a good fit for junior and mid-career industry and health plan professionals seeking a taste of HEOR in order to determine whether the field is a fit for them, or simply to boost their effectiveness in working across departments."

Dr. Laura T. Pizzi, Professor and Director

HEALTH OUTCOMES, POLICY, AND ECONOMICS CERTIFICATE

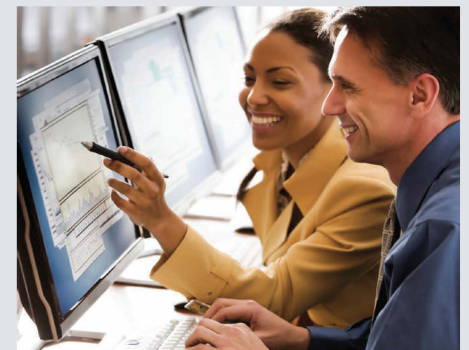
Foundation in Health and Pharmaceutical Value Assessment



The 18-credit Health Outcomes, Policy, and Economics (HOPE) Certificate offered jointly by the Ernest Mario School of Pharmacy and the Rutgers School of Public Health can help you advance your knowledge and skills in the science of evaluating costs and outcomes of biopharmaceutical treatments and application to healthcare decision-making.

THE HOPE CERTIFICATE IS INTENDED FOR

- Junior and mid-career professionals
- Biopharmaceutical industry workforce
- Health or pharmaceutical benefit providers



PROGRAM DESIGN

The schedule for completing the HOPE Certificate is flexible. You can complete the program in two-three semesters, if desired, or you can plan a schedule for completing the six courses over a two-year period (the maximum timeframe.) The late afternoon/evening schedule and online course offerings make it convenient to continue working or gain experience while earning your HOPE Certificate. The Certificate courses may also be applied toward an MS-HOPE degree at the Rutgers School of Public Health. (Certificate holders must still apply and be admitted to the MS program.)

COST

Tuition is governed by Rutgers University and is subject to change without notice. Please visit sph.rutgers.edu/admissions to confirm current tuition rates and fees.

For Gainful Employment information, please visit sph.rutgers.edu/academics/certificate-programs.html

Graduates of CEPH-accredited schools and programs of public health may transfer up to six (6) credits towards a certificate program if earned within the past seven years with a grade of B or better and are deemed appropriate by the respective Certificate Program Director.

FOR MORE INFORMATION

Office of Admissions:
732-235-4646
admissions@sph.rutgers.edu

Program Director:
Laura T. Pizzi, PharmD, MPH
848-445-6825
hope_info@pharmacy.rutgers.edu